

<u>MEETING</u> HEALTH OVERVIEW AND SCRUTINY COMMITTEE
<u>DATE AND TIME</u> THURSDAY 9TH JULY, 2020 AT 6.00 PM
<u>VENUE</u> VIRTUAL MEETING

Dear Councillors,

Please find enclosed additional papers relating to the following items for the above mentioned meeting which were not available at the time of collation of the agenda.

Item No	Title of Report	Pages
1.	NORTH CENTRAL LONDON CLINICAL COMMISSIONING GROUP (NCL CCG) <ul style="list-style-type: none"> • Executive Managing Director, Barnet, NCL CCG 	3 - 10

This page is intentionally left blank



North Central London
Clinical Commissioning Group

North Central London CCG – Merger Update

AGENDA ITEM 11

Background



North Central London
Clinical Commissioning Group

- Our journey to merging Barnet, Camden, Enfield, Haringey and Islington CCGs to form North Central London (NCL) CCG commenced in early 2019.
- The merger proposal was approved by all five Governing Bodies in September 2019 and by NHS England in November 2019.
- Member practices were invited to vote on a new NCL CCG Constitution in November, with a majority of votes received in favour of the new Constitution (and a majority in each borough also achieved).
- Staff of all five CCGs were transferred to the new NCL CCG on 1 April 2020, following a TUPE consultation.
- The five CCGs merged to form North Central London CCG on 1 April 2020.
- The single CCG continues to work closely with Councils, providers, general practices, voluntary, community organisations, and unions, to achieve our shared aims.

Key features of single NCL CCG

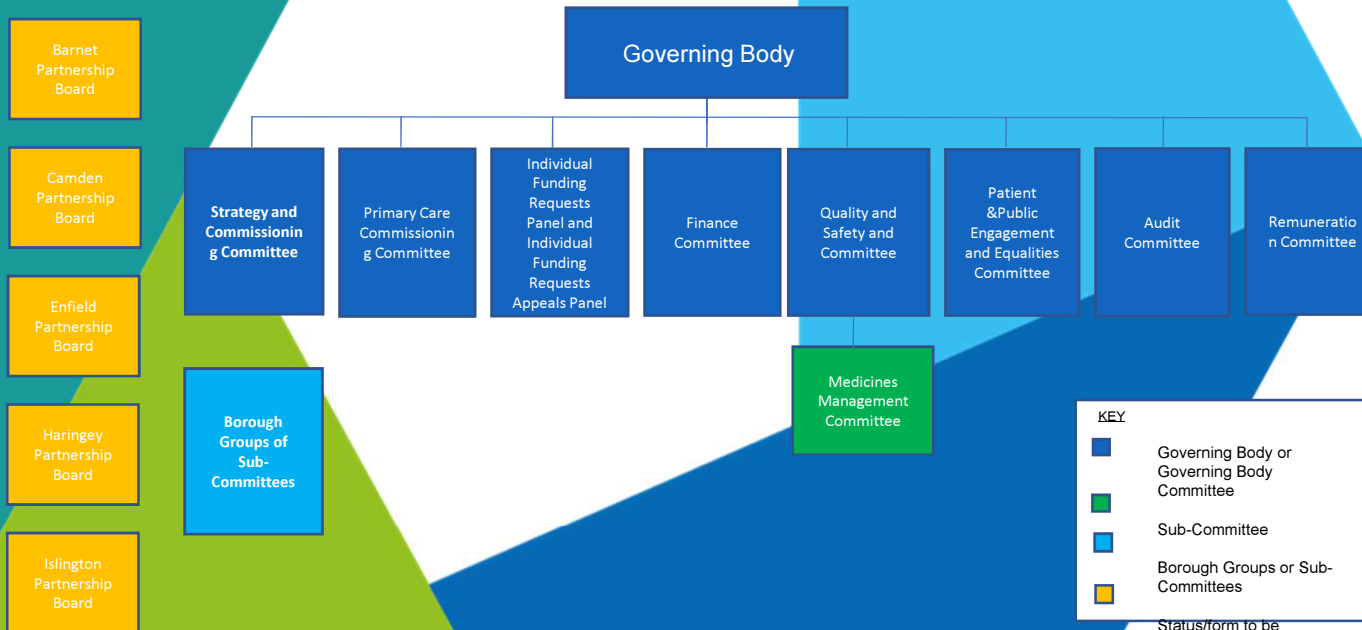
- NCL CCG is made up of a single Governing Body, with two elected GP representatives from each borough. The Governing Body also comprises a secondary care clinician, registered nurse, three lay members and CCG representatives.
- A number of committees have been established for NCL CCG and Terms of Reference for all committees have been approved by the Governing Body.
- There continues to be borough-level decision-making arrangements for primary care, community, and mental health commissioning within schemes of delegation.
- As well as clinical representation on our Governing Body, we have recruited to a range of clinical lead roles including some NCL-wide and some within boroughs.
- The CCG has a single Executive Management Team and a single Director-level structure in place.

CCG Governance



North Central London
Clinical Commissioning Group

Robust, transparent and efficient governance arrangements are at the heart of North Central London CCG. The Governing Body is the primary decision making vehicle for the NCL CCG – supported by eight Governing Body committees reporting into it.



The Governing Body will have a clinical majority and comprise **17 Voting Members**:

Elected roles

- 10 Elected Clinical Representatives (2 from each borough)

Appointed roles

- 1 Secondary Care Consultant
- 1 Registered Nurse
- 3 Lay members with different remits including patient and public engagement, equality and diversity and finance.

Executive Director roles

- 1 Accountable Officer
- 1 Chief Finance Officer

Attendees (non-voting)

- Other Executive Directors on the NCL Executive Management Team
- 1 Healthwatch representative from across NCL
- 1 Director of Public Health from across NCL
- 1 local authority Councillor from across NCL

KEY

- Governing Body or Governing Body Committee
- Sub-Committee
- Borough Groups or Sub-Committees

Status/form to be confirmed

Primary Care in NCL



North Central London
Clinical Commissioning Group

North Central London is a diverse area covering five London boroughs, with 202 member practices.

Barnet

Population: 425,395
Practices: 52
Primary Care Networks: 7
Federation: Barnet Federated GPs

Camden

Population: 303,267
Practices: 33
Primary Care Networks: 7
Federations: Haverstock Healthcare & Camden Health Evolution (CHE)

Barnet

Enfield

Haringey

Camden

Islington

Enfield

Population: 425,395
Practices: 47
Primary Care Networks: 4
Federation: Enfield GP Federation

Haringey

Population: 298,418
Practices: 37
Primary Care Networks: 8
Federation: Federated 4 Health

Islington

Population: 257,135
Practices: 33
Primary Care Networks: 4
Federation: Islington GP Federation

Partnership working



North Central London
Clinical Commissioning Group

- The collective Covid-19 response has helped health and care services across NCL integrate and collaborate better than ever before.
- This will be built on in the coming months as we recover from Covid-19 and work with our system partners to set out plans for our development towards an Integrated Care System (ICS) for NCL.
- The borough remains the key level for partnership working and local Integrated Care Partnerships (ICPs) continue to develop.
- We will continue to have a presence at local Health and Wellbeing Boards – and HOSCs – with both clinical Governing Body members and Executive CCG staff attending.
- We will continue to work closely with the Councillors from each borough who hold the health and care portfolio; with one member attending the Governing Body meetings and regular meetings between all five members and our EMT.

Patient and public engagement



North Central London
Clinical Commissioning Group

- Patients and residents were engaged and informed of our merger plans throughout 2019/20 and this local engagement with residents as well as partners will be built on as we recover from Covid-19 and progress our plans to establish an integrated care system and borough-based integrated care partnerships.
- As part of the development of the ICS and ICPs, the CCG will work with partners to consider how best to engage with our residents and patients across the NCL footprint.
- In addition to three lay members on the Governing Body, we are currently recruiting ten community members to join five of our committees.
- The Patient and Public Engagement and Equalities Committee met for the first time in June, with local authority representation.

NCL CCG Priorities



North Central London
Clinical Commissioning Group

- We are developing a new operating model for the single CCG that will enable us to realise the benefits of working as a single organisation, for the CCG and wider NCL health and care system.
- Some of our key priorities as we move forward as a single NCL CCG are:
 - ✓ Embed the new NCL CCG in a changing health and care landscape
 - ✓ A sustained Covid-19 response as the system begins to recover
 - ✓ ICS and borough-based ICP development
 - ✓ Address health inequalities in North Central London and invest appropriately to ensure better health outcomes for all residents
 - ✓ Transform services to ensure they are integrated, coordinated and structured around our population and communities
 - ✓ Work with partners to address our financial challenges as a system.